

2026 COMPANY PROFILE CATALOG

Committed to Quality. Focused on the Future.

This catalog provides an overview of our company and highlights a curated selection of our product portfolio.

GTCC

Welcome to our products catalog

COMPANY PROFILE

公司简介

Headquartered in Guangzhou, GTC (est. 2019) is a globally oriented automotive spare parts company supplying premium-quality components to international wholesale and export markets.

Leveraging advanced sourcing capabilities, structured quality systems, and strategic partnerships, the company ensures reliable global distribution and high-performance solutions.

Through integrated product development, strict quality control, and continuous improvement, GTC maintains competitiveness and operational excellence across international markets.

Our commitment to quality, efficiency, and long-term partnerships supports sustainable global growth and customer satisfaction.



TABLE OF CONTENTS

01 | SUSPENSION & STEERING

02 | ENGINE SYSTEM

03 | DRIVETRAIN SYSTEM

04 | BRAKE SYSTEM

05 | DUST COVER SERIES

06 | AIR CONDITIONING SYSTEM

07 | FILTER SERIES

08 | EXHAUST GAS SYSTEM

09 | FASTENER SERIES

10 | BODY PARTS

11 | ELECTRICAL PARTS

12 | AUTOMOTIVE LIGHTING

13 | CLUTCH SYSTEM

1 - SUSPENSION & STEERING



- Designed for smooth handling and maximum driving stability.
- Ensures precise control and enhanced comfort on every road.

1- SUSPENSION & STEERING

Air suspension



Shock Absorber



Ball joint



Spring bag



Brake disc



Brake pad



Bushing



Coil spring



CV.Joint



Control Arm



Rubber



StabilizerLink



Steering Rack



Strut mount



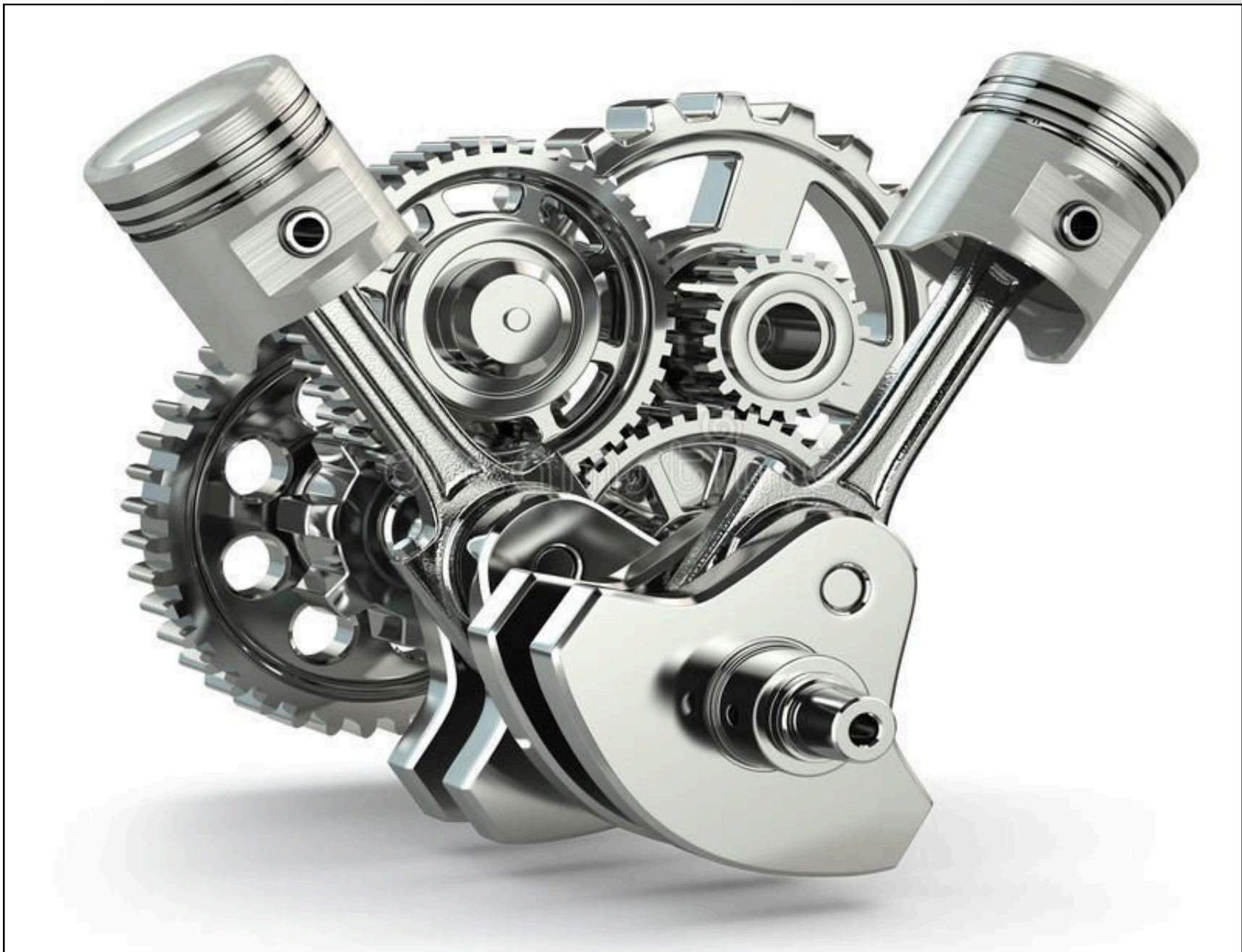
Bearing



Tie Rod



2 - ENGINE SYSTEM



- The heart of your vehicle, delivering reliable power and performance.
- Built for efficiency, durability, and long-lasting operation.

2- ENGINE SYSTEM

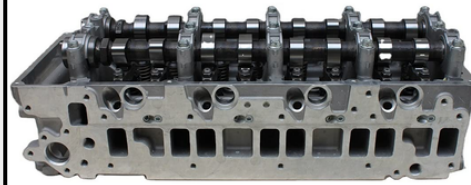
Injector



Camshaft



Cylinder head



Fly wheel



Connecting rod



Engine valve



Piston



Piston ring



Crankshaft



Air filter



Fuel filter



Oil filter



Fuel filter



Mount



Oil pump



Gasket kit



2- ENGINE SYSTEM

Water pump



Thermostat



Spark plug



Glow plug



Timing belt kit



Timing tensioner



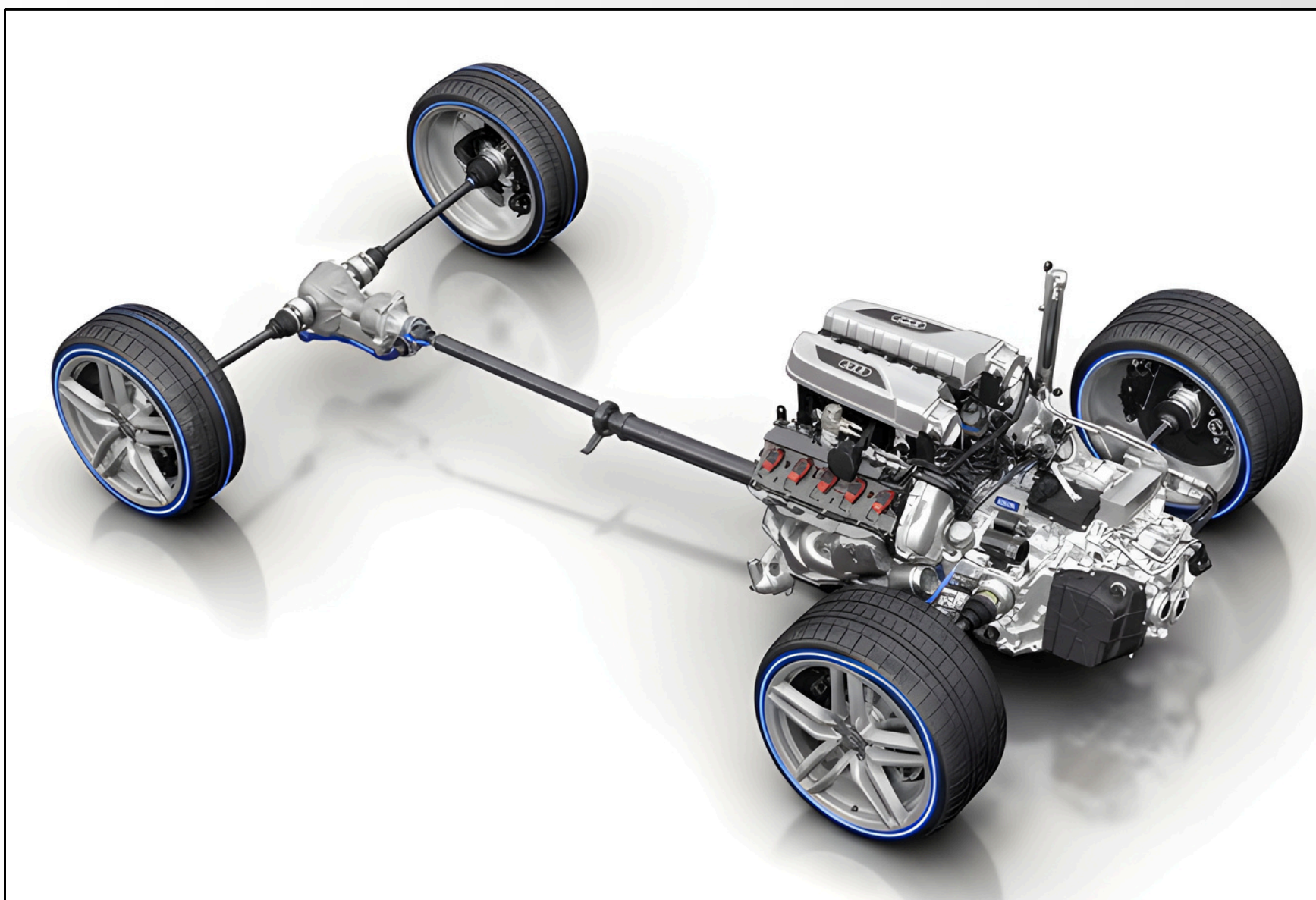
Tensioner pully



Timing tensioner



3 - DRIVETRAIN SYSTEM



- Transfers power from the engine to the wheels with maximum efficiency.
- Engineered for smooth acceleration and optimal performance.

3- DRIVETRAIN SYSTEM

Stub Shaft & Flange Shaft



CV Joint



Intermediate Shaft



Stub Shaft



Flange



Rear Axle Shaft



Propshaft Repair Kit



Drive Shaft



Propshaft



Transmission Mounting



Center Bearing Repair Kit



Flexible Coupling



Stub Axle



Bearing Kit





Hub Repair Kits



Hub



3- DRIVETRAIN SYSTEM

<p>Drive Shaft</p> 	<p>Gen.1st</p> 	<p>Gen.1st</p> 	<p>Gen.2nd</p> 
<p>Gen.2nd</p> 	<p>Gen.3rd</p> 	<p>CV Axles</p> 	<p>Carrier Bearing Brackets</p> 
<p>Center Support Bearings</p> 	<p>constant velocity joint outside</p> 	<p>Extreme Duty (XD) Axles</p> 	<p>Extreme Duty Plus (XDP) Axles</p> 
<p>inner constant velocity joint</p> 	<p>CV joint boots</p> 	<p>Plug Shaft</p> 	<p>Cardan shafts</p> 

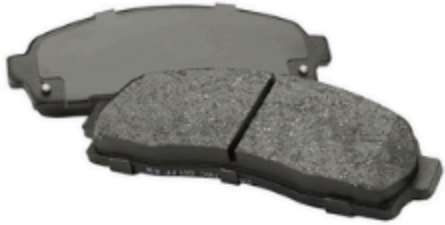
4 - BRAKE SYSTEM



- Advanced braking performance for maximum safety and control.
- Provides quick response and reliable stopping power in all conditions.

4- BRAKE SYSTEM

Brake Pad



Brake Shoe



Brake Lining



Brake Disc



Brake Drum



Brake Caliper



Caliper Piston



Caliper Repair Kit



Wheel Cylinder



Master Cylinder



Brake Booster



Brake Hose



Brake Reservoir



Hand Brake Lever



ABS Sensor



ABS Pump



4- BRAKE SYSTEM

ABS Module



Brake Fluid



Bleeder Screw



Brake Clips



Brake Spring Kit



Shim Kit



Parking Cable



Brake Pipe



Brake Pad



Wheel Cylinder



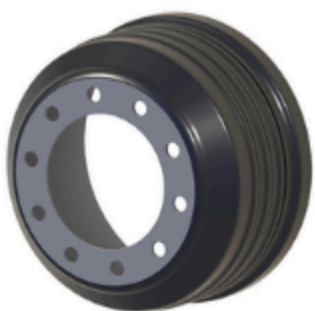
Brake Shoe



Master Cylinder



Brake Drum



Brake Disc



Brake Caliper



Brake Booster



5- DUST COVER SERIES



- Protects critical components from dust, dirt, and external damage.
- Enhances durability and extends the lifespan of auto parts.

5- DUST COVER SERIES

CV Boot



Shock Absorber Dust Cover



Steering Rack Dust Boot



Tie Rod End Dust Boot



Ball Joint Dust Boot



Strut Dust Cover



Drive Shaft Dust Boot



Brake Caliper Dust Boot



Clutch Release Bearing Dust Cover



Universal Joint Dust Seal



Sway Bar Link Dust Boot



Wheel Hub Dust Cap



Propeller Shaft Dust Boot



Clutch rubber dust cover



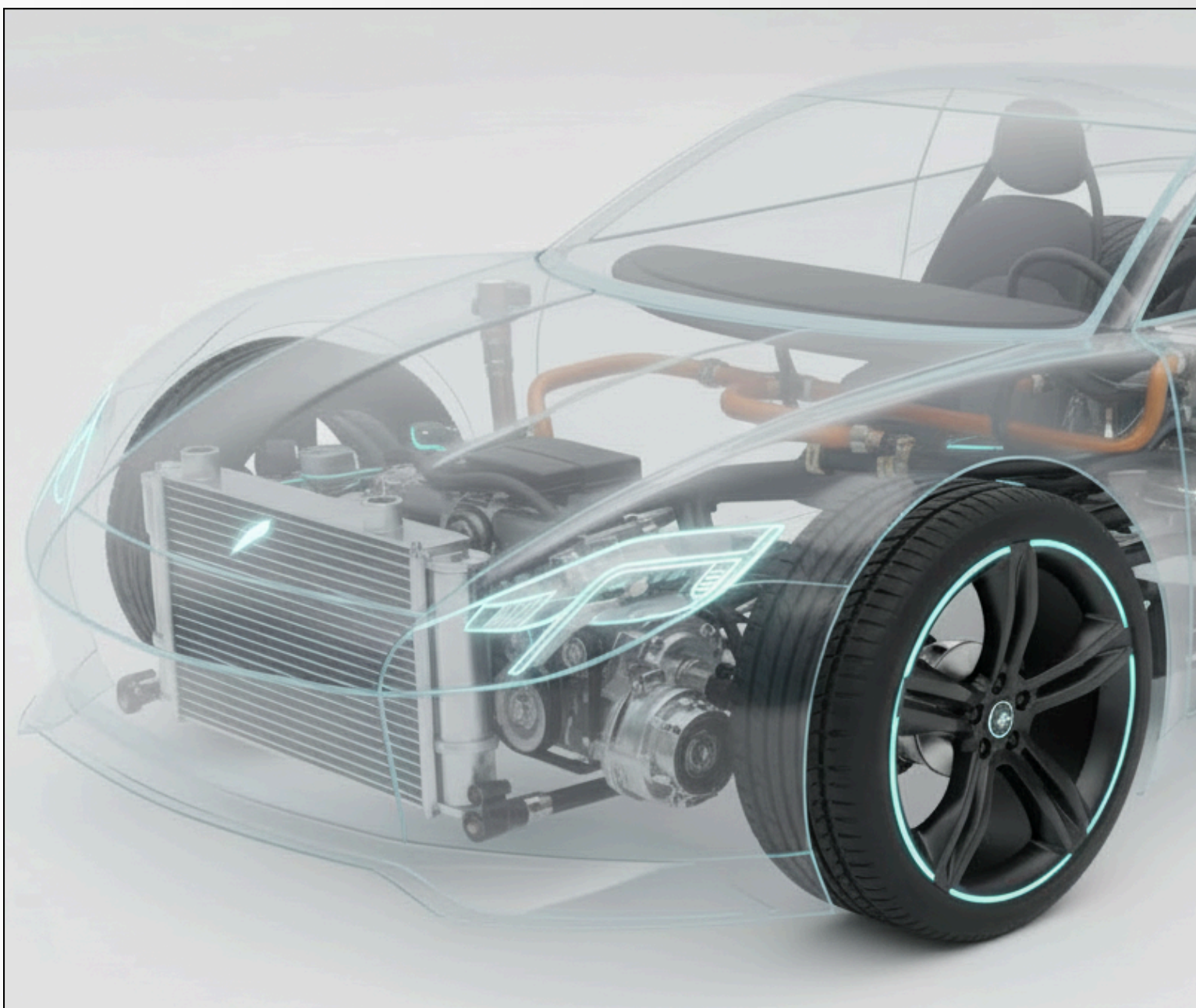
Arm dust Boot



Steering Column Dust Cover



6- AIR CONDITIONING SYSTEM



- Delivers efficient cooling for a comfortable driving experience.
- Designed for consistent airflow and optimal climate control.

6- AIR CONDITIONING SYSTEM

AC Compressor



Compressor Clutch



Compressor Coil



Compressor Control Valve



Compressor Pulley



AC Condenser



Condenser Fan



Condenser Motor



Condenser Bracket



Evaporator



Evaporator Core



Evaporator Temperature Sensor



Expansion Valve



Orifice Tube



Receiver Drier



Accumulator



6- AIR CONDITIONING SYSTEM

AC Hose



AC Pipe



AC Line Assembly



AC Suction Hose



AC Discharge Hose



AC Pressure Switch



AC Pressure sensor



High Pressure Switch



Low Pressure Switch



AC Temperature Sensor



Ambient Temperature Sensor



Blower Motor



Blower Motor Resistor



Blower Fan



Cabin Blower Assembly



AC Control Panel



6- AIR CONDITIONING SYSTEM

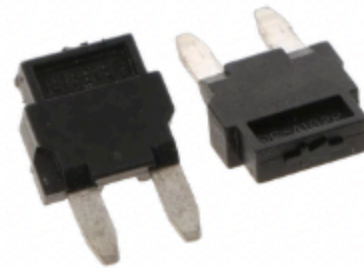
AC Control Module



AC Relay



AC Fuse



Heater Control Valve



Heater Core



Heater Hose



HVAC Actuator



Blend Door Actuator



Mode Door Actuator



Air Mix Door Actuator



AC O-Ring Kit



AC Seal Kit



Compressor Mount



Ventilation Blower



Cabin Filter



Drain Hose



7- FILTER SERIES



- Ensures clean air, fuel, and oil for better engine performance.
- Improves efficiency and protects vital engine components.

7- FILTER SERIES

Air Filter



Cabin Air Filter



Oil Filter



Fuel Filter



Hydraulic Filter



Transmission Filter



Coolant Filter



Brake Dust Filter



Steering Filter



Urea Filter



Crankcase Filter



Diesel Filter



Gasoline Filter



Water Separator



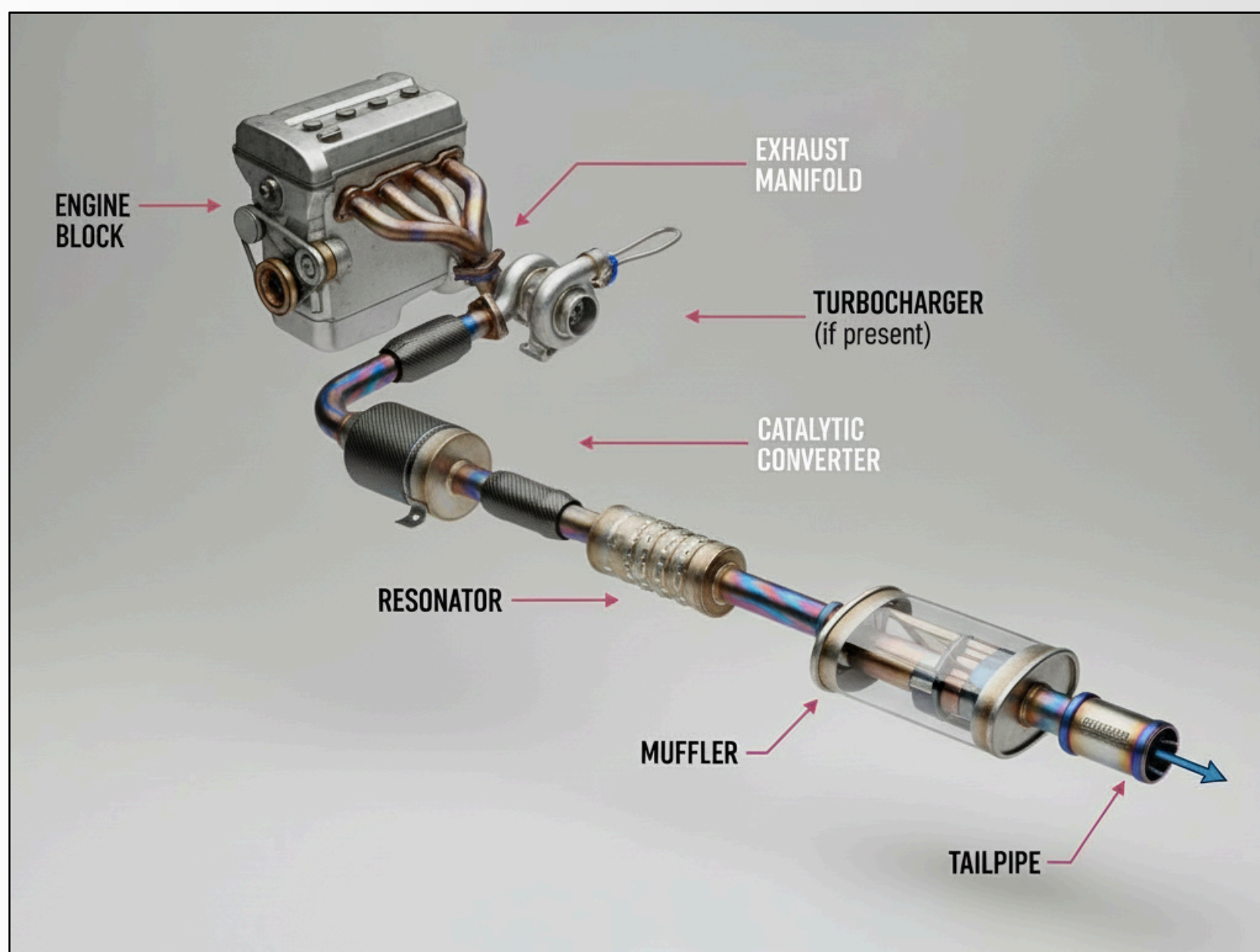
Spin-On Filter



Suction Filter



8- EXHAUST GAS SYSTEM



- Optimizes exhaust flow while reducing harmful emissions.
- Enhances engine performance and environmental compliance.

8- EXHAUST GAS SYSTEM

Exhaust Manifold



Catalytic Converter



Muffler



Resonator



Exhaust Pipe



Exhaust Tail Pipe



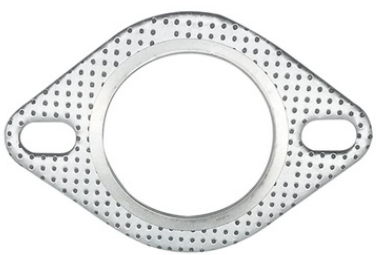
Exhaust Flex Pipe



Oxygen Sensor



Exhaust Gasket



Exhaust Clamp



Exhaust Hanger



Exhaust Heat Shield



Exhaust Flange



EGR Valve



EGR Pipe



Diesel Particulate Filter (DPF)



9- FASTENER SERIES



- Reliable fastening solutions for all automotive applications.
- Ensuring safety, strength, and performance in every connection.

9- FASTENER SERIES

Hex Bolts



Flange Bolts



Carriage Bolts



Lock Nuts



Panel Clips



Door Trim Clips



Fender Clips



Self-Tapping Screw



Machine Screw



Set Screws



Wing Nuts



Flat Washers



Lock Washers



Rubber Washers



Hose Clamps



Split Pins



9- FASTENER SERIES

Eye Bolts



Wood Screw



U-Bolts



Socket Screw



Shear Nuts



Shear Nuts



Hex Nuts



Nylon Insert Nuts



Cup Washers



Repair Washers



Tooth Lock Washers



Flat Washers



Pop Rivets



Multi-Grip Rivets



Solid Head Rivets



Drive Rivets



10- BODY PARTS



- Precision-engineered body parts for superior fit and finish.
- Combining style, strength, and reliability in every detail.

10- BODY PARTS

Front Bumper



Rear Bumper



Grille



Fender



Quarter Panel



Doors



Door Handle



Side Mirror



Roof



Windshield



Window Glass



Wiper Blade



Headlight



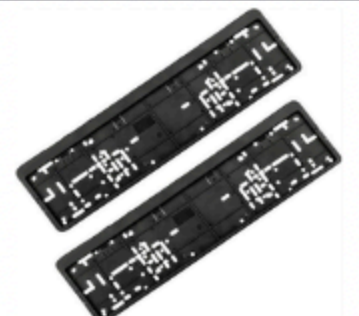
Tail Light



Fog Lamp



Number Holder



11- ELECTRICAL PARTS



- Reliable electrical components designed for stable performance.
- Ensuring efficient power distribution and long-lasting durability.

11- ELECTRICAL PARTS

Battery



Alternator



Starter Motor



Ignition Coil



Spark Plug



Fuel Injector



Oxygen Sensor



Engine Control Unit (ECU)



Fuse



Relay



Wiring Harness



Headlight



Taillight



Turn Signal Switch



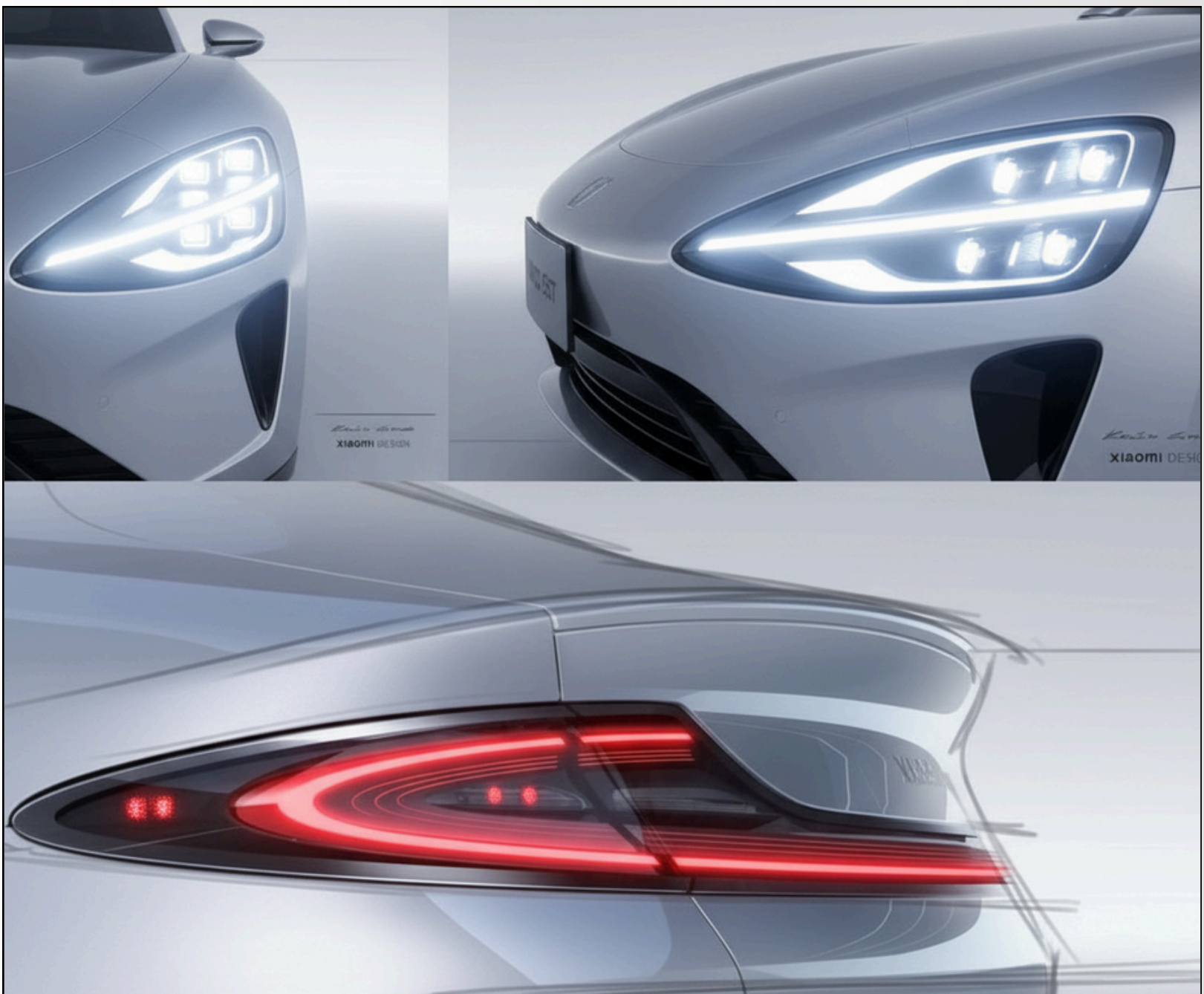
Power Window Switch



Horn



12- AUTOMOTIVE LIGHTING



- High-performance lighting for enhanced visibility and safety.
- Designed for clarity, durability, and modern vehicle styling.

12- AUTOMOTIVE LIGHTING

Headlight Assy



Tail Light Assy



Fog Light



Daytime Running Light (DRL)



Turn Signal Light



Brake Light



Reverse Light



Dome Light



License Plate Light



Side Marker Light



High Mount Stop Lamp



HID Lamp



LED Bulbs



Halogen Bulbs



Lightening Control Modul



Light Sensor



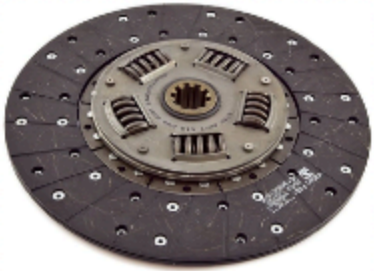
13- CLUTCH SYSTEM



- Engineered for smooth power transmission and driving control.
- Provides durability, efficiency, and consistent performance.

13- CLUTCH SYSTEM

Clutch Disc



Clutch Cover



Clutch Master Cylinder



Clutch Slave Cylinder



Clutch Cable



Clutch Fork



Clutch Kit



Clutch Repair Kit



Clutch Housing



Clutch Pedal



Clutch Switch



Clutch Damper



Pressure Plate



FlyWheel



Release Bearing



Pilot Bearing/Bush



• Our packaging



- Our packaging reflects our commitment to quality and reliability.
- Every detail is designed to meet international standards.

• Signature Collection

Premium corporate gifts designed to reflect our brand identity and appreciation for our partners.





 Address :

No. 103, Victoria building Tiyuxi Road,
Tianhe District, Guangzhou

 Number :

+86 19584812176

 Website :

www.gear-tech-group.com

